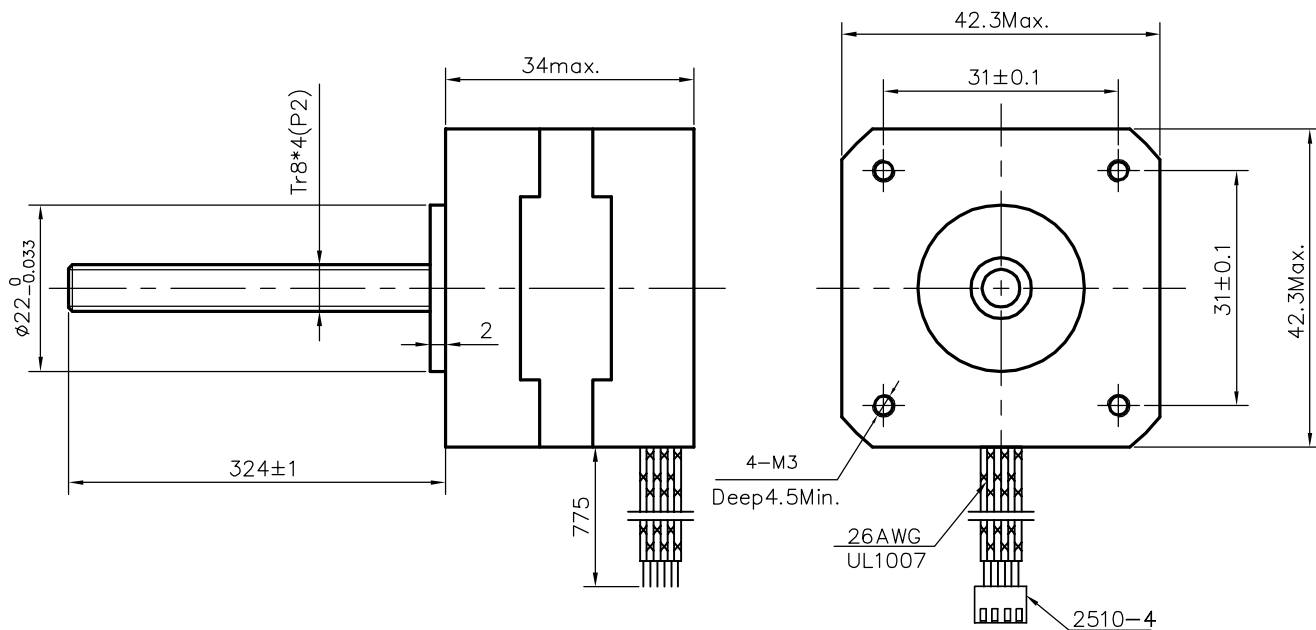
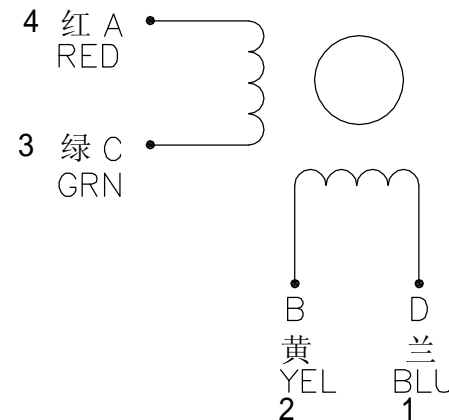


Dimension:
Unit=mm

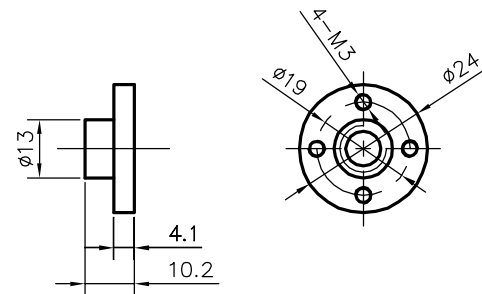


Wiring Diagram:



Specifications:

相数 Phase	2	Comment
步距角 Step Angle	1.8 deg.	
电压 Voltage	2.8 V	
相电流 Current	1.33 A	
相电阻 Resistance	2.1 Ω	
相电感 Inductance	2.5 mH	
静力矩 Holding Torque	2.6 kg.cm	
绝缘等级 Insulation Class	B	
重量 Mass	0.22 kg	



REV.	QTY.	No.	SIG.	DATE	Title:		
					Specification		
DESIGN			STD.		CLS.MAK	WEIGHT	SCALE
CHECK							
PROC.			APPR.		PAGE: OF PAGES		

42HS34-1334-04LA